

HG2 Emergency Lighting

REAR VISOR[®]



INSTALL GUIDE

2020-2024 CHEVROLET TAHOE

866.468.4569 | www.HG2LIGHTING.com | Support@hg2lighting.com

© 2024 Copyright HG2 Emergency Lighting. All Rights Reserved.

UNDERSTANDING THE GUIDELINES



The HG2 Runner® Package is an extremely versatile emergency lighting system designed for maximum visibility with a minimal footprint. HG2 Runners were developed to enhance the outline of a vehicle's profile (rear of vehicle), offering greater visibility through installation location, variable flash patterns and lighting intensity.

Our patent-pending designs feature super-bright, wide-angle LEDs, a high-impact polycarbonate housing and a powder-coated extruded aluminum mounting sleeve for stealth installation.

SAFETY FIRST!

This guide provides information for a safe and proper installation of your HG2 Emergency Lighting product. Please read this guide in its entirety before attempting to install or operate this product.

This guide offers information that could prevent damage or serious injury. The installation of this kit may require that the vehicle is safely supported off of the ground, using jack stands or a vehicle lift. Never work on vehicle supported only by a jack. Observe all warnings and procedures as outlined in the manual or instructions provided by the manufacturer of your jack stands, vehicle lift and other necessary tools required to install this kit.

Installer or technician should have a good understanding of automotive electronics, and a general working knowledge of related automotive systems and procedures.

When mounting this product, care must be taken to avoid damage/interference to vehicle components and systems—such as brake and fuel lines, electrical devices (computers and airbad sensors) and wiring:

- Inspect both sides of mounting surface before drilling or interting fasteners.
- Use fasteners of proper length.
- Install control components in accessible location that provides for safe operation of the vehicle an product controls under any driving condition.
- Do not install this product in a manner that inerferes with moving parts, or where lift or jacks are used to raise the vehicle.
- Do not install this product in a manner that interferes with the deployment of an airbag.


When wiring this product:

- Deburr and install grommets into any holes drilled for wiring.
- Route wires to avoid sources of the excessive heat and any moving parts, such as exhaust, suspension systems, brake pedal.

- Deburr and install grommet.
- Secure all wires using wire/cable ties or equivalent.
- Use NEGATIVE (-) battery post for all chassis ground connections for optimum performance and efficiency.
- Do not install this product in a manner that interferes with the deployment of an airbag.

DO NOT:

- Stare directly into the lights. High-intensity LEDs can cause momentary blindness and/or damage to your eyes.
- Mount product/product-controls that interfere with/impede safe operation of vehicle.
- Attempt to initiate or control this lighting system during hazardous driving consitions..
- Clean product with a pressure washer, solvents or other chemicals.



FAILURE TO FOLLOW THESE GUIDELINES COULD CAUSE DAMAGE TO THE PRODUCT, VEHICLE AND/OR SERIOUS PERSONAL INJURY OR DEATH.

NEVER WORK UNDER THE HOOD WITHOUT THE PROPER EQUIPMENT IN PLACE TO HOLD THE VEHICLE SAFELY AND SECURELY WHILE OPERATING/FIXING IT.

INSTALL PREPARATION & TOOLS



Model

2020 | Chevrolet Tahoe
2021 | Chevrolet Tahoe
2022 | Chevrolet Tahoe
2023 | Chevrolet Tahoe
2024 | Chevrolet Tahoe

Parts List

1 - 35" HG2 Rear Visor Light
1 - Rear Visor Template
1 - Driver's Bracket Template
1 - Center Bracket Template
1 - Passenger Bracket Template
1 - 10A Fuse
1 - Installation Guide and Warranty Info

Required Tools

- Drill
- 5/8" Drill Bit
- 5/16" Drill Bit
- Wire Strippers
- Wire/Cable Ties

(Additional tools may be required to complete installation)

Pre-Install Instructions

1. Read the installation guide for this product in its entirety.
2. Unpack product components and review parts list.
3. Bench test Rear Visor Platform Module and Rear Visor using 12v power supply to ensure components are in working order.
4. Disconnect negative terminal from vehicle battery.
5. Remove door sill panels at all door locations.



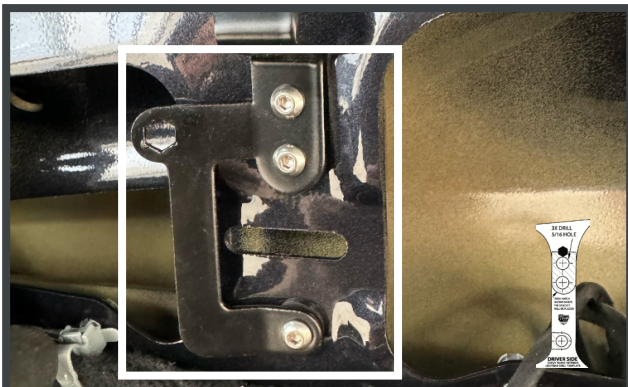
**FAILURE TO FOLLOW THESE GUIDELINES
COULD CAUSE DAMAGE TO THE PRODUCT,
VEHICLE AND/OR SERIOUS PERSONAL INJURY
OR DEATH.**



1. Disassemble by pulling down the rear visor trim. Position the template guide face up on the plastic trim.



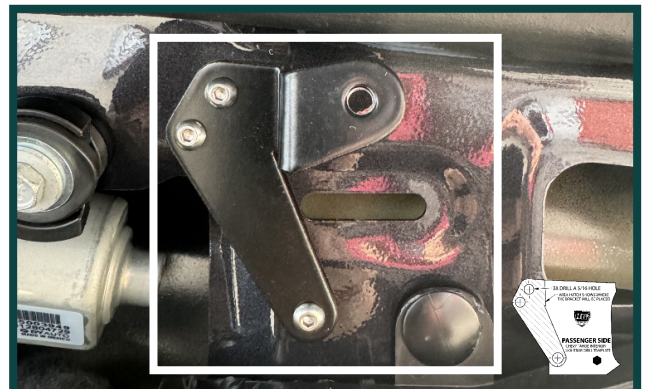
2. Align the driver's side short edge with the mark and drill two holes using a 5/8 bit. Flip the template, align the short edge to the marked location on the passenger side, and drill a third hole.



3. After removing the trim, insert the supplied Driver's Side Bracket template into the space, aligning with the punched hole. Use the template guide for alignment. Drill three 5/16 holes and attach the bracket with supplied screws.



4. Insert the provided Center Bracket template into the space, aligning with punched holes and curve. Utilize the template guide for alignment. Drill three 5/16 holes and secure the bracket with supplied screws.



5. Insert the provided Passenger Bracket template into the space, aligning with punched holes. Utilize the template guide for alignment. Drill three 5/16 holes and secure the bracket with supplied screws.



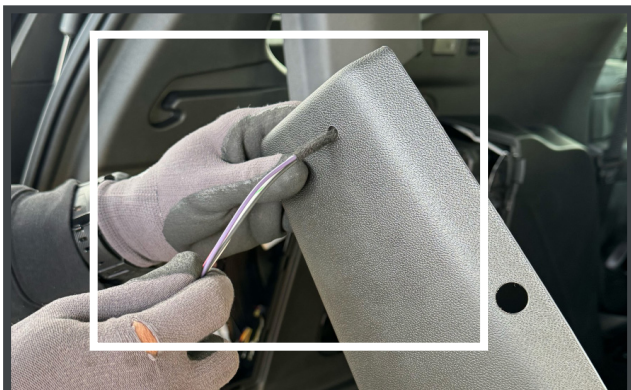
Inspect exterior of vehicle to ensure mounting fasteners will not be obstructed by, or damage, vehicle systems such as fuel or brake lines. Examine the vehicle's interior floor, under carpet and door sills to make certain drilling of holes or insertion of fasteners will not damage or interfere with wiring, sensors or computers.



6. Measure 1 inch from the driver's side on the plastic trim and 1 inch from the curve. Drill 1 additional 5/16 hole for the wiring harness to run under the plastic trim. Exercise caution to avoid drilling through the existing harness; drill pieces separately.



7. Attach the rubber glass seal/flashback gasket to the light assembly.




8. Thread the wire loom through the plastic trim panel and trim connector into the body panel. Route the wire to the existing power through the harness or controller.



9. Reattach the plastic trim cover.



10. Use the provided 3 bolts for light installation. The longer bolt is for center installation; place it first to hang the light. Hand tighten only—avoid power tools and over-tightening.



Inspect exterior of vehicle to ensure mounting fasteners will not be obstructed by, or damage, vehicle systems such as fuel or brake lines. Examine the vehicle's interior floor, under carpet and door sills to make certain drilling of holes or insertion of fasteners will not damage or interfere with wiring, sensors or computers.



11. Insert the bolt on the driver's side and hand-tighten.



13. Thread the wire loom through the plastic trim panel and trim connector into the body panel. Route the wire to the existing power using the harness or controller.



12. Proceed to the next bolt on the passenger side and hand-tighten.

Wiring Connections

Power/Change - White
Ground - Black
Activate - Blue
Cruise Mode - Red



Inspect exterior of vehicle to ensure mounting fasteners will not be obstructed by, or damage, vehicle systems such as fuel or brake lines. Examine the vehicle's interior floor, under carpet and door sills to make certain drilling of holes or insertion of fasteners will not damage or interfere with wiring, sensors or computers.

TROUBLESHOOTING

Problem		Solution
HG2 Product does not illuminate	<ol style="list-style-type: none"> 1. No power to RPM12 module 2. Power wires reversed 3. Fuse blown 4. Improper ground to chassis 	<ol style="list-style-type: none"> 1. Check wiring for loose connection; check fuse 2. Checking wiring diagram; reverse power wires 3. Replace fuse 4. Ensure ground wire terminates to metal chassis ground
External fuse blows	<ol style="list-style-type: none"> 1. Power wires shorted 2. Incorrect fuse size 	<ol style="list-style-type: none"> 1. Check power connections for damaged or shorted wiring 2. Replace with correct fuse size
HG2 Product illuminates regardless of ignition switch position	<ol style="list-style-type: none"> 1. RPM12 Module wired to constant +12v power source 	<ol style="list-style-type: none"> 1. Check wiring connection to RPM12 Module for switched power
Incorrect flash pattern	<ol style="list-style-type: none"> 1. Wrong flash pattern is selected 	<ol style="list-style-type: none"> 1. Select another pattern; see Basic Operations: Selecting Patterns
Flash patterns continually change	<ol style="list-style-type: none"> 1. RPM12 Module in “Demo Mode” 	<ol style="list-style-type: none"> 1. Exit “Demo Mode”; see Basic Operations: Demo Mode

WARRANTY

This warranty gives you certain rights and you may also have other rights that may vary from state to state. This warranty is given only to the end-user purchaser of the accompanying product (referred to in this warranty as “this Product”).

Product Registration

HG2 Emergency Lighting warrants Products within the “Warranty Period” and that have been properly registered. To register this Product, go to www.hg2lighting.com. Each HG2 product must be registered within 90 days of purchase.

What Is Covered

HG2 Emergency Lighting warrants to you for the Warranty Period that there are no defects in the materials and workmanship of this Product. The “Warranty Period” is a maximum of 5 years (Limited) from the date of purchase with proof of purchase.

What Is NOT Covered

This warranty is VOID—that is, this Product has no warranty—if (1) you did not purchase this Product from an authorized HG2 reseller within the United States, (2) this Product has been serviced, modified or tampered with by anyone other than an Authorized Service Representative of HG2 Emergency Lighting (3) the serial number has been modified, defaced or removed from this Product, (4) this Product has been abused or purposely damaged, (5) non-HG2 controllers have been used, (6) this Product has been transported without the proper preparation and packaging, (7) a non-certified HG2 Installer performed work on the unit or installed the unit.

If Your Product Defective

Call 866-468-4569, or if you suspect a defect in materials or workmanship in this Product, you can report it to a HG2 Emergency Lighting Authorized Service Center. During the Warranty Period, supply HG2’s representative with a copy of your dated bill of sale showing that this Product was purchased within the United States. For the name of HG2 Authorized Dealer or Distributor call 866-468-4569. After contacting the HG2 Authorized Dealer or Distributor, you may be required to deliver or send the Product properly packaged, freight prepaid, to the Authorized Service Center together with a photocopy of your bill of sale.

What HG2 Will Do

HG2 will evaluate your report of a possible defect to determine whether a defect exists, and if it does exist, HG2 (or its Authorized Service Center) will repair this product or (at HG2’s option) replace this Product with a product that performs the same functions and performs as well as the original Product. HG2 reserves the right to supply refurbished or

remanufactured replacement products provided that the replacement products meet the manufacturer’s specifications for new products. The repaired or replacement product will be returned to you at no cost.

Exchange Service

HG2 Emergency Lighting Systems are covered by an 5 Year Limited Warranty. You must contact HG2 Support to first troubleshoot the issue, and if this Product is deemed inoperable, then a RMA (Return Merchandise Authorization) will be opened and sent to you. All RMA shipments must have the RMA number listed on the box or on a form in the box. Return shipments without RMA information attached will not be guaranteed.

HG2 Support

Toll-free customer service and technical support is available for assistance at 866-468-4569. You may access more HG2 support by going to the HG2 website at: www.hg2lighting.com.

Please keep a record of this Product by completing the online registry. In response we will send a confirmation of the approved registered products. Retain this information with your proof of purchase (bill of sale) in case your Product is lost, stolen, or requires service.

You may ship this product back to

Attn: Returns

HG2 Emergency Lighting

477 N. Semoran Blvd, Orlando FL, 32807

Important

We recommend that you keep all original packing materials, in the event that you ship this product.

HG2 Emergency lighting reserves the right to discontinue, modify, or upgrade any products it manufactures with design improvements without prior notice.

THIS WARRANTY IS GIVEN IN LIEU OF ALL OTHER WARRANTIES, WRITTEN OR ORAL, WHETHER EXPRESSED BY AFFIRMATION, PROMISE, DESCRIPTION, DRAWING, MODEL, OR SAMPLE. ANY AND ALL WARRANTIES OTHER THAN THIS ONE, WHETHER EXPRESSED OR IMPLIED, INCLUDING IMPLIED WARRANTIES OF MERCHANTABILITY AND FITNESS FOR PARTICULAR PURPOSE, ARE HEREBY DISCLAIMED.